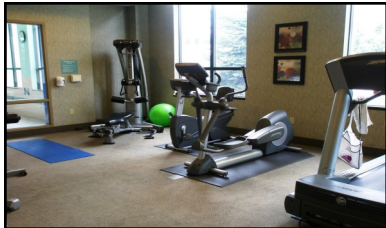


**\*USS POWER DD 839 ASSOCIATION\***  
**15th SHIPMATES REUNION**  
**JUNE 25-29, 2011**  
**4-NIGHTS SATURDAY TO WEDNESDAY C/O**  
**HILTON GARDEN INN**  
**WORCESTER, MASS.**



### Hotel Services & Amenities

Baggage Storage \*Coin Laundry\* Elevators\* Local Area Transportation \*Lounge\* Luggage Hold \*Multi-Lingual Staff\* News Stand  
On-Site Convenience Store \*Room Service\* Safety Deposit Box \*All the comforts of home \*A fridge and microwave in your room  
24-hour Pavilion Pantry® convenience mart for last minute impulses.\*Work out in the complimentary fitness center,  
Relax in the whirlpool or take a plunge in the pool enjoy complimentary high-speed internet access in every guest room  
And secure remote printing to the 24-hour business center.

Check-in: 4:00PM

Check-out: 12:00PM

**ROOM RATE \$96.00 per night + tax 14.45%**

**PARKING FEE \$5.00 per vehicle per day In & Out privileges to Hotel Guest**

**Full Breakfast Buffet \$9.95 + tax & gratuity**

**Group rate 3 days prior to 6/25/2011 & 3 days following 6/29/2011 based on availability**

**ROOM RESERVATION CALL TOLL FREE 1-877-782-9444 or Direct 508-753-5700**

**\*USE THE GROUP CODE # USS839 \***

**CUT OFF DATE FOR BOOKING IS MAY 25, 2011**

**INDIVIDUAL RESEVATION CANCELLATION WILL BE ACCEPTED WITHOUT PENALTY 72 HOURS PRIOR TO ARRIVAL**

### Directions to our Hotel

NOTE: Major Taylor Blvd. was Worcester Center Blvd and may not be in all GPS systems or found in MAP quest at this time, we advise you use 35 Worcester Center Blvd.

South from Maine: I-95 South to 495 South to 290W. Get off Exit 16. Make right at the bottom of ramp. At the third set of lights the hotel will be on the right.

From Boston: Take Mass Pike West I-90. Take exit 10A (Worcester/Providence). At first set up lights take a right towards 146 North. Merge onto 290 East. Take exit 16 (Downtown Worcester). At end of ramp take a left onto MLK Blvd. Continue straight through three sets of lights. Hotel is across the street from the DCU Center on the right.

North from Hartford: North on I-84 to mass Turnpike I-90 East to Exit 9 Auburn. Take 290 East to Exit 16. Left off ramp. At the third set of lights the hotel will be on the right.

From Springfield: Take Mass Turnpike East to Exit 10- Auburn Route 290 East to Exit 16, left off ramp. At third set of lights, the hotel will be on your right

### Local Airports

General Edward Lawrence Logan Int'l

Distance from hotel: 46 mi

Drive time: 56 min.

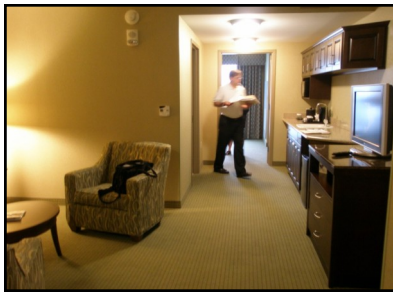
Directions: Route 90W to Route 146 North to Worcester. This brings you to Route 290. Take Exit 16 off Route 290, follow E. Central Street.

### Hotel Parking

Self Parking: across street (Discounted Rate for USS POWER ASSOCIATION \$5.00)

Handicap Parking : In Rear of Hotel

In/Out Privileges: Available Secured: Covered:



**Hospitality Room Suite # 315** Will add chairs and tables and remove the bed for more room. Set up ice and trash containers





**DOOR TO DOOR AIRPORT SERVICE:**

**LOGAN INTERNATIONAL (BOSTON) T.F. GREEN (PROVIDENCE)  
BRADLEY (HARTFORD) WORCESTER REGIONAL AIRPORT MANCHESTER NH  
AND SERVICE FOR: AMTRAK (PROVIDENCE)**

**Boston Logan Airport Shuttle and Private Limousine Transportation Service.**

Serving Boston Logan Airport, and T.F. Green Airport with Shuttle Service and Private Limousine Transportation. Book Online and Save Time

**1-800-822-5456**

**24 Hour Service Available**

Leave the frustration of traffic and waiting behind. Don't risk missing your flight. You can always rely on us to provide comfortable and reliable transportation. Hourly rates available for any occasion!

Our modern and luxurious vehicles are air conditioned and 2-way radio equipped to monitor flights and traffic problems. All major credit cards accepted.

Email to: [info@knightslimo.com](mailto:info@knightslimo.com)

Knights Airport Service • 390 Hartford Turnpike, Shrewsbury Ma 01545 • (508) 839-6252  
© 2001-2010 Knight's Airport Limousine Service. All rights reserved.

| [Online Reservations](#) | [Airport Fare Quote](#) | [Airport Shuttle](#) | [Private/Charter](#) |  
| [Our Vehicles](#) | [Airport Pick Up Locations](#) | [FAQs](#) | [Contact Us](#) | [Site Map](#) |

MORE UPDATES TO FOLLOW



